



# Fork

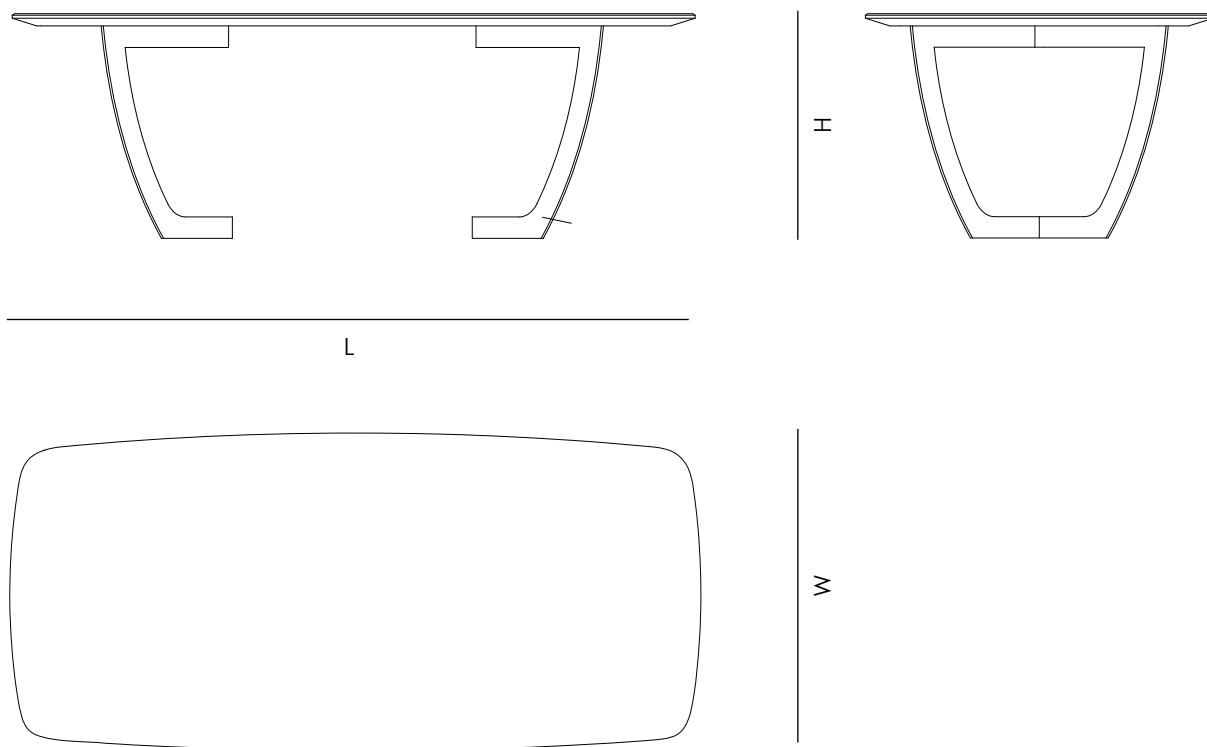
Fork is a powerful combination of elegance and modernity.

The supporting structure consist of two incredibly light yet sturdy easels that can be easily stacked to reduce significantly the shipping volume.

The table top is vailable is several wood finishes and natural stones.

ETAMORPH

ETAMORPH LLC | [info@etamorph.com](mailto:info@etamorph.com) | [www.etamorph.com](http://www.etamorph.com) | Copyright © 2023



## DIMENSIONS

FKL180	71" L x 39.5" W x 30" H (in) 1800 L x 1000 W x 760 H (mm)
FKL220	86.5" L x 39.5" W x 30" H (in) 2200 L x 1000 W x 760 H (mm)
FKL280	110.25" L x 43.5" W x 30" H (in) 2800 L x 1100 W x 760 H (mm)

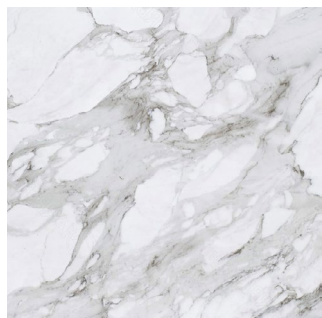
## MATERIALS

TABLE TOP	3/4" (20 mm) Marble slab with lacquered wood support (see finishes page) 1 1/2" (40 mm) Solid wood top (see finishes page)
TABLE LEGS	5/16" (8mm) Folded steel (see finishes page)

ETAMORPH

ETAMORPH LLC | [info@etamorph.com](mailto:info@etamorph.com) | [www.etamorph.com](http://www.etamorph.com) | Copyright © 2023

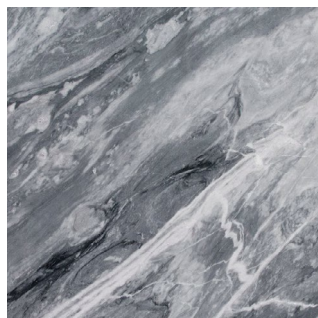
## TABLE TOP MATERIALS



Calacatta Gold



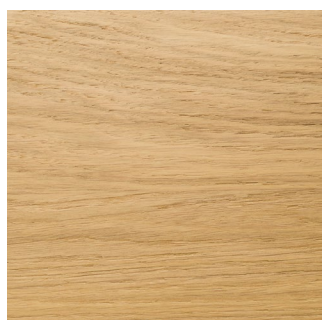
Nero Marquina



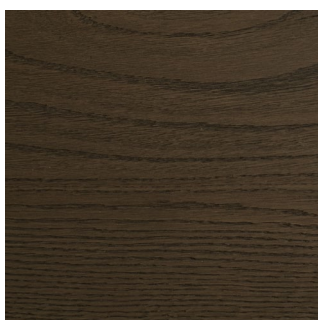
Apuan Grey



Verde Alpi



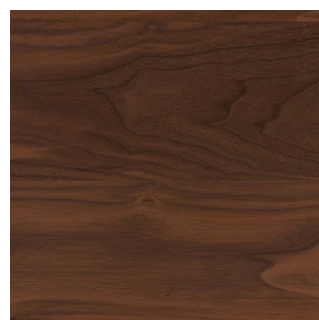
European Oak  
Natural or Sanded



Stained Oak  
Dark Brown

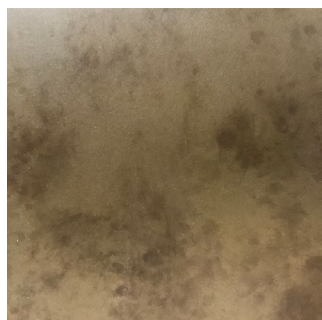


Stained Oak  
Charcoal



Walnut  
Natural or Light

## LEGS MATERIALS



Steel  
Delabre Bronze



Steel  
Black Coating

ETAMORPH

ETAMORPH LLC | [info@etamorph.com](mailto:info@etamorph.com) | [www.etamorph.com](http://www.etamorph.com) | Copyright © 2023