



# Mini Fork

With a curved cross structure in thick metal, Mini Fork combines robustness and lightness with great elegance.

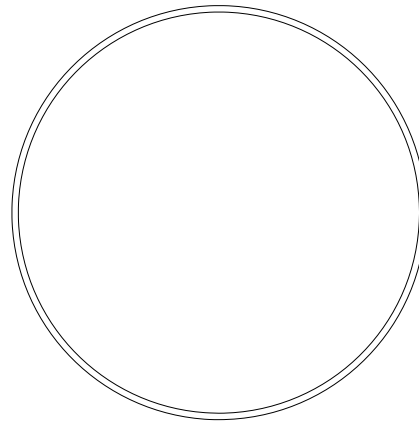
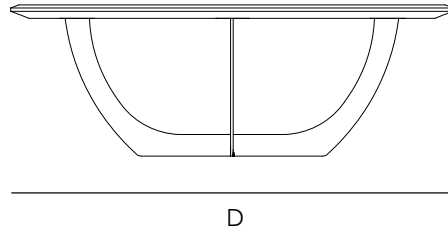
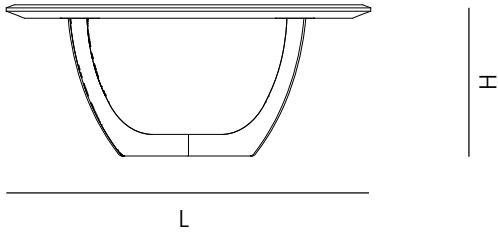
Available in several finishes, the 2 metal arcs that compose the supporting structure are shipped separately to significantly reduce the shipping volume.

A masterful technique of high-end Italian craftsmanship made possible the creation of an elegant metal support that can be easily assembled through an interlocking joint in the center.

The table top is available in several kinds of wood finishes and natural stones.

ETAMORPH

ETAMORPH LLC | [info@etamorph.com](mailto:info@etamorph.com) | [www.etamorph.com](http://www.etamorph.com) | Copyright © 2023



## DIMENSIONS

### MFS76

#### SQUARED TOP

29.5" L x 13.75" H (in)

750 L x 350 H (mm)

### MFS96

#### SQUARED TOP

39.5" L x 13.75" H (in)

1000 L x 350 H (mm)

### MFC96

#### CIRCULAR TOP

39.5" D x 13.75" H (in)

1000w W x 350 H (mm)

### MFR140

#### SQUARED TOP

55" W x 27.5" H (in) x 13.75" H (in)

1400 L x 700 W (mm) x 350 H (mm)

## MATERIALS

TABLE TOP 3/4" (20 mm) Marble slab  
with lacquered wood support  
1.25" Solid Wood  
Oak or Walnut

TABLE LEGS 1/8" (3mm) folded metal:  
Powder coated steel (RAL colors)  
Delabre Bronze

ETAMORPH

ETAMORPH LLC | info@etamorph.com | www.etamorph.com | Copyright © 2023

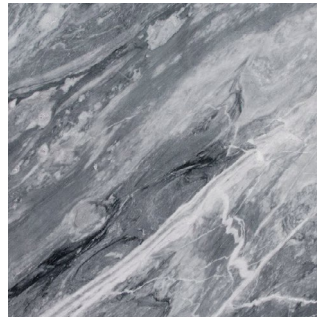
## TABLE TOP MATERIALS



Calacatta  
Natural Beauty



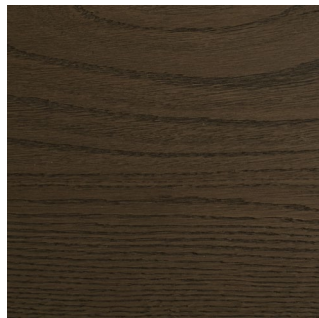
Nero Marquina



Apuan Grey



European Oak  
Natural or Sanded



Stained Oak  
Dark Brown

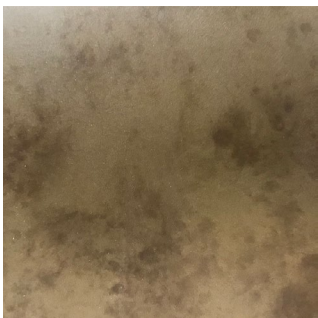


Stained Oak  
Charcoal



Walnut  
Natural or Light

## LEGS MATERIALS



Steel  
Delabre Bronze



Steel  
Black Coating

ETAMORPH