



Lotus

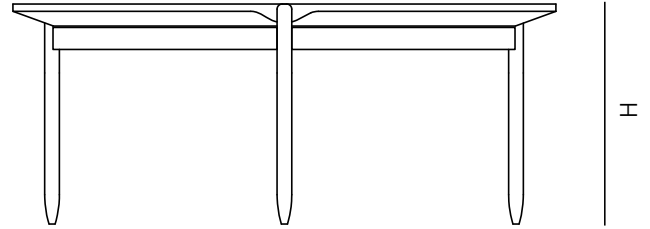
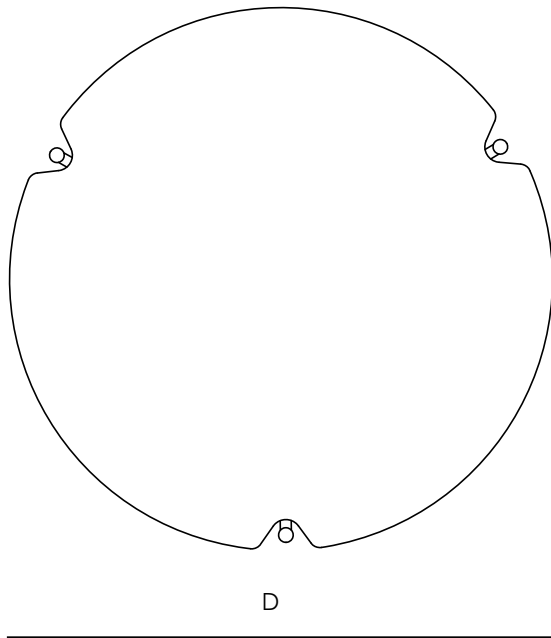
Lotus coffee table draws inspiration from the extraordinary structure of a water lily. The thin roots of the aquatic plant are planted in the soil of the pound bed, while the leaves float on the water's surface or are held well above it. Like the big leaves of the aquatic plant, the table tops can be held at different levels and overlapped to create different compositions.

Available in natural stone, solid wood or lacquered MDF, the tabletops are masterfully crafted in three different diameters with a beveled edge that evokes the natural elegance of the lotus pad.

Handcrafted in Italy

ETAMORPH

ETAMORPH LLC | info@etamorph.com | www.etamorph.com | Copyright © 2023



DIMENSIONS

D 16.5" (42 cm) - H 16.5" (42 cm)
 D 29" (74 cm) - H 14.25" (36 cm)
 D 37.75" (96 cm) - H 16.5" (42 cm)

MATERIALS

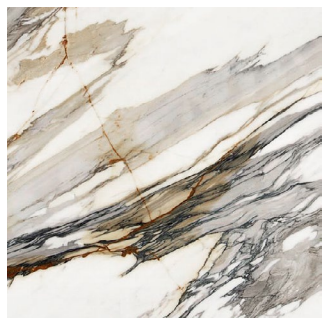
TABLE TOP 3/4" (2 cm) thick natural stone
 1 1/4" (3 cm) thick solid wood

LEGS Solid Steel (see finishes page)

ETAMORPH

ETAMORPH LLC | info@etamorph.com | www.etamorph.com | Copyright © 2023

TABLE TOP MATERIALS



Calacatta
Natural Beauty



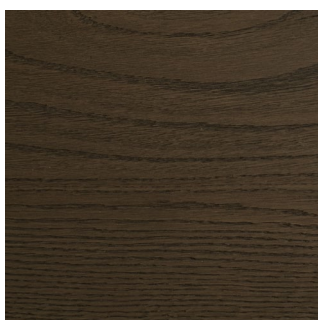
Nero Marquina



Apuan Grey



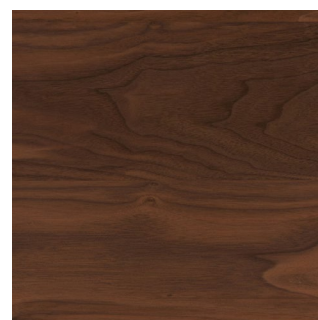
European Oak
Natural or Sanded



Stained Oak
Dark Brown

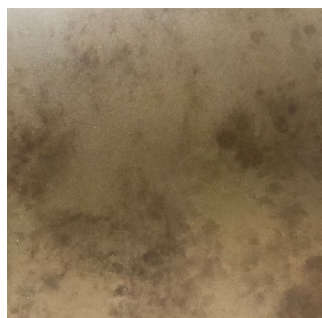


Stained Oak
Charcoal



Walnut
Natural or Light

LEGS MATERIALS



Steel
Delabre Bronze



Steel
Black Coating

ETAMORPH

ETAMORPH LLC | info@etamorph.com | www.etamorph.com | Copyright © 2023